

April 2011

NEXT SERVICE PROJECT:

April 16, Yellow Fork Trail Re-Routing, 8am

NEXT RIDE:

April 23, Yellow Fork Ride, RTR 830

NEXT MEETING:

Bits and Biting
Thur April 14: 7 pm,
[Cottonwood Retirement Center 1245 East Murray-Holladay Road \[4752 South\]](#)

THANK YOU!

To Everyone who helped at the Expo!

INSIDE THIS ISSUE:

President's message	1-2
Dogs & Horses	3
Schedule	4
Minutes	5
Park City Rail Trail	6
Cowboy Poetry	7
Membership Form (Send it NOW!)	8



Mountain Ridge

Back Country Horsemen of Utah

P R E S I D E N T ' S M E S S A G E

Greetings, Back Country Horsemen,

This month we have three fun events — our April 14th meeting will have a demonstration and discussion of bits and biting from Mark Nielson, arranged by Pat Wilson. That Saturday (April 16), we will help reroute a section of trail in Yellow Fork that is being washed out by the creek. April 23 we will ride where we worked, and enjoy a nice ride in Yellow Fork. Thanks to Bob Baker for helping with the Yellow Fork project and ride.



Poker Ride / Obstacle Course

On May 7th a Poker Ride/Obstacle Course has been added to the Mountain Ridge BCHU 2011 Schedule. Stephanie Yeager has been

asked to head-up a committee to put this event together and she needs HELP! So, please contact her at (801) 232-8806 or yeagirls@msn.com to volunteer your time, offer ideas and/or suggestions... (Thank you in advance from Steph!)



LET'S HAVE SOME FUN!!!

— Tom Smith

FIVE MILE PASS RECREATION AREA FROM FRED LESLIE

Due to the inclement weather during the winter months the "West Desert" has become a favorite place for many of us to exercise our horses with no more than an hour trailer time. A popular "West Desert" trailhead is the "10-mile marker" along SR73 where we head northwest to the cabin or northeast to the "kitchen" area.

While riding this area we frequently hear people target practicing with their firearms. This can become a bit disconcerting not knowing where the bullets will end up and making sure the shooters know we are there.

I've enclosed a map on page 3 showing the Five Mile Pass Recreation Area. The dark line is its border and shows this area is of

significant area, not just the 20 acres we see ATV's riding off the side of the highway. The entire recreation area is Target Shooting Closure Area. I've drawn in guesstimated point where the Trailhead is the trail to cemetery, cabin, and



kitchen area. As it shows once we pass the cemetery and cross the paved road to Mercur Canyon there are no longer restrictions on target shooting. This is where we see most of the shooting. Going the

other way to the "kitchen area" we see that this is totally restricted to target practice. Also see photos on page 8.

I thought this might be of interest to those who ride there. If we find offenders there really is not much we can do. By the time it's reported they will long be gone. We all know by now that our and our horses best defense is to let people know where we are so we and horse are not startled and remember education is a win-win proposition where confrontation is a lose-lose proposition.

A map is included on the following page, and photos are on the back page of this newsletter.

BCHU MOUNTAIN RIDGE MEETING 10 MARCH 2011

Present: Paul Deputy, Jo Stoddard, Doris Richards, Bruce Kartchner, Diana van Utiert, Ray Smith, Stephanie Yeager, Perry White, Pat Wilson, Fred Leslie, Sandy Williams, Curt Hobson Meeting called to order by Paul Deputy @ 1909.

Welcome to new member Curt Hopson.

Paul Deputy reported on The Dimple Dell advisory board meeting that was held on March 10, 2011. He spoke to the board regarding the need to step up patrols in the Dell for dogs that are not on leashes. He will be attending a meeting with the Sandy city police on 16 March @1000 . The purpose of the meeting is to get input on starting a V. I. P. program (volunteers in park).

Perry White reported that Mountain Ridge will be primarily in charge of the Back Country Horsemen booth at the Expo. He thanked everyone who volunteered to help. Fred Leslie and Cyndi Furse will be giving demonstrations on packing independently of each other.

Jo Stoddard reported on the next service project that comes up next month on 18 April in Yellow Fork. Please come with shovels, nippers, chain saws etc. @ 0800.

Fred Leslie motioned that **Perry White** be elected by vote to fill the vacancy in the 2nd vice president position. **Paul Deputy** seconded the motion. This motion passed unanimously. Discussion followed.

Paul Deputy stated the executive

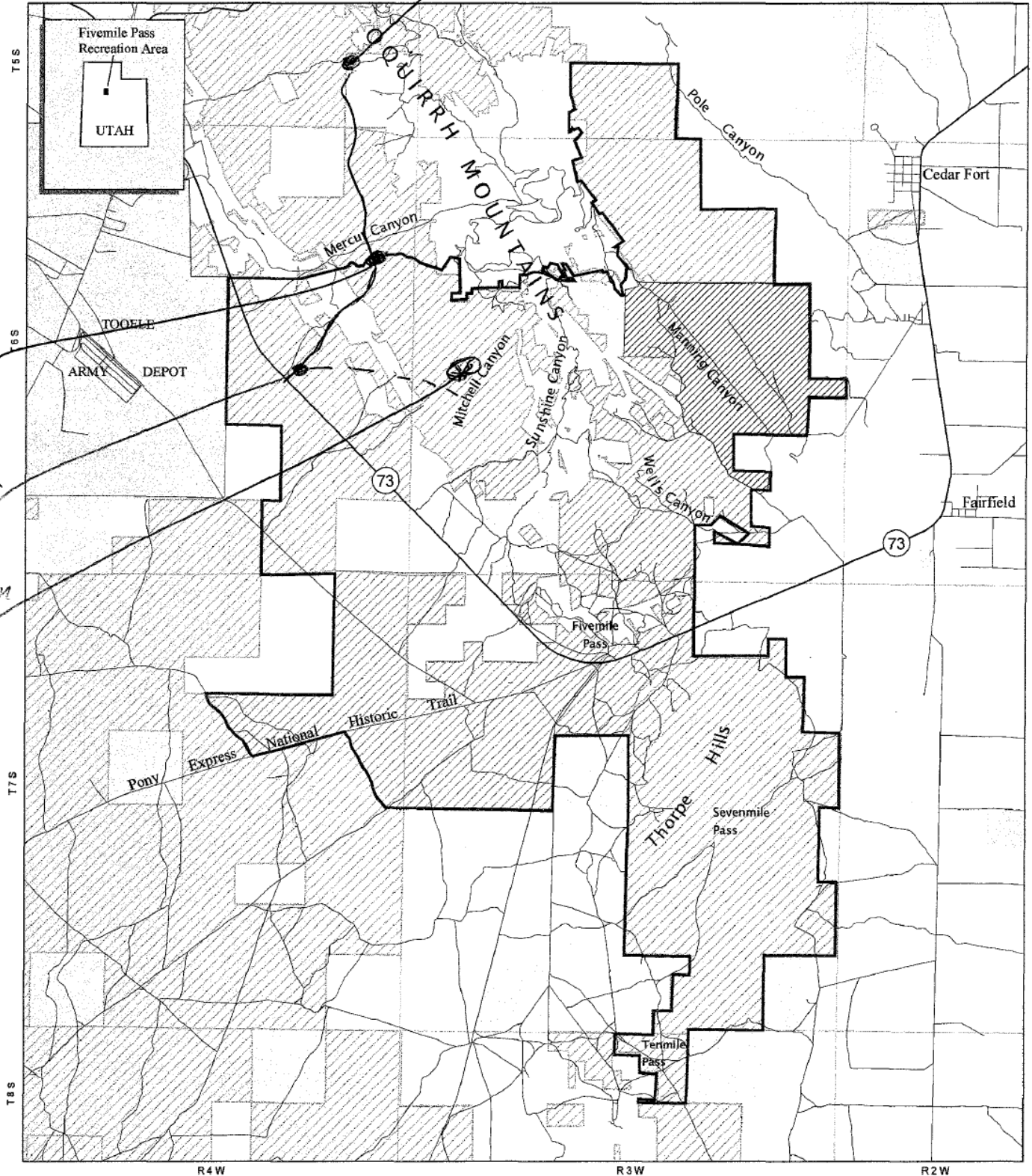
committee will be meeting in May and will revisit the chapter's by laws to bring them into line with the state's by laws.

Please note that there are some changes to the original schedule of events due to the change in leadership. Dogs are no longer welcomed on the trail rides. Please them at home or in camp. On June 10-11 the club ride will be the wagon train event rather than Bryce Canyon. Fred Leslie states the Corduroy Project will be on August 12, 13, 14 again in the high Uintas.

Meeting adjourned at 2000.

Respectfully submitted,
Pat Wilson

FIVEMILE PASS RECREATION AREA



OFF-HIGHWAY VEHICLE (OHV) DESIGNATIONS

- CLOSED
- LIMITED TO EXISTING ROUTES
- OPEN

TARGET SHOOTING CLOSURE AREA

- BLM
- MILITARY RESERVATIONS
- PRIVATE
- STATE

E



1:60,000

U.S. Department of the Interior
Bureau of Land Management
Salt Lake Field Office

May 17, 2007



No warranty is made by the Bureau of Land Management as to the accuracy, reliability, or completeness of these data. Different data sources and input scales may cause misalignment of data layers.

BITS AND BITTING



Come hear Mark Neilson talking about Bits and Biting at the next MR BCHU meeting — **April 14, 7pm** [Cottonwood Retirement Center 1245 East Murray-Holladay Road \[4752 South\]](#) Arranged by Pat Wilson.

And 'what's this picture?'
It is an ancient Persian horse bit.

Wow. Art + Brakes.

Interesting concept.

CHECK OUT THE NEWSLETTER ARCHIVE
AND THE BCHU WEBSITE

What do hobbles, packing, and safety stirrups all have in common? Where can I find out how Fred Leslie ties the famous Double Diamond hitch? What should I take on my first pack trip? How does my horse stay warm in the winter? All these, and more, are on the BCHU website ([bchu.com](http://www.bchu.com)). Check out the Education page. Our goal has been to put everything you need for your first pack trip together in one place. Let us know what is missing! (email cfurse@ece.utah.edu). And, to make things easier, I've created an index of the educational material available on the BCHU page. This includes the articles from the Mountain Ridge Newsletter and the various videos and articles on the Education Page. I've attached it with the electronic copy of this newsletter, and if you would like one but only get the hardcopy, call me, and I'll print and send you one. (801-581-9225). Here's a sample of what's there In the e-version, if you click on the blue links, the newsletter / website will come up....

Mountain Ridge Newsletter Articles	Month	Year	Page
Animal Tracks: Hooved Animals	sept	2010	6 to 7
Bear Safety	August	2009	6
Bear safety	July	2010	4 to 5
Bison	October	2010	6 to 7
Bitless Bridle	August	2009	7
Body Condition Scoring	December	2009	5 to 6
Dehydration and Horses	June	2009	4
Dehydration and Horses (more notes)	July	2009	4
Dogs and Horses	March	2011	5
Dutch Oven Cooking	October	2010	4 to 5
Electric Fences for travel	August	2010	7 to 8
Etiquette on the Trail	http://www.bchu.com/newpacking.htm		
First Aid for your Horse	April	2010	5
GPS locator	Nov	2009	6 to 7
Hay, Weed Free	http://www.bchu.com/newpacking.htm		
Helmet Brims	May	2010	3
Hobbling Your Horse	February	2011	6 to 7

And more (See attached.)

MOUNTAIN RIDGE BCHU 2011 SCHEDULE

**Yellow Fork — April 16 & 23**

April 14, 7pm Monthly Meeting. [Cottonwood Retirement Center 1245 East Murray-Holladay Road \[4752 South\]](#) Mark Nielson — Bits and Biting. Arranged by Pat Wilson.

April 16, 8am-Noon, Yellow Fork Trail Rerouting project (contact Bob Baker bobbucksnot@q.com 572-3996; 631-8058; 808-7554) Bring shovels, hand and chain saw, pick, gloves, etc. The place we will be working is very near the trailhead, so no need for horses, although some folks might ride afterwards. Weather permitting. See directions to trailhead below.

April 23, Yellow Fork Ride (contact Bob Baker, 572-3996; 631-8058; 808-7554, bobbucksnot@q.com). Ready to ride at 8:30am. Parking is limited, so please trailer-pool as much as possible. Weather permitting.

We will ride about 3 1/2 hours and will be back at the trailhead for lunch. Bring your own, but join us for lunch together.

Trail will probably still be soft and wet, with some rocky areas. Shoes are

recommended but may not be required, depending on your horse.

To get to the trailhead: From I-15, take Bangerter exit to 13400S. Go west through Herriman to Rose Canyon Road (6400 West). Turn left (south) and follow the road all the way to the 3way stop sign. Turn right and follow to the end (several miles, all paved). Trailer parking is to the left across the bridge. Parking is rough and rutty., and it's limited, so get there early, trailer-pool, park tightly and efficiently, etc.

May 7 Poker Ride/Obstacle Course Stephanie Yeager has is heading up a committee to put this event together and she needs HELP! So, please contact her at (8 0 1) 2 3 2 - 8 8 0 6 o r yeagirls@msn.com to volunteer your time, offer ideas and/or suggestions.

May 12, 7pm Monthly Meeting & Sandy Pride Trails Day Project (contact Doris Richards)

May 14, Corner Canyon, (contact

Jo Stoddard / Paul Kern) Ready to ride at 10. Meet at Andy Ballard Arena. About a 3 hour ride, bring lunch and water.

June 9, 7pm Monthly Meeting

June 9-11 Coalville Wagon Trail (contact Paul Kern) RSVP and registration required.

June 18, Camp Kostopulos Veterans Ride Service Project at Dimple Dell (contact Bob Baker)

June 24-26 Blackhawk Rides and Campout, Reserve a campsite in Loop E. Ride Saturday leaves at 10. If you want to ride Sunday, let me know. (contact Cindy Furse) Make reservations in loop E at recreation.gov 1-877-444-6777

July 9, American Fork Canyon (contact Pat Wilson). 5-6 hour ride, trotting included. Steep trail, horses must be in shape.

July 14, 7pm Monthly Meeting

July 22-23 (riding days), Island Park (contact Paul Kern) RSVP! Maximum 14 people can go.

Aug 11, 7pm Monthly Meeting

Aug 12-14, Corduroy Packing Project, High Uintas (Fred Leslie)

Aug 19-21, Pack Trip (contact Fred Leslie or Cindy Furse), location TBD (Uintas?) RSVP!

Sept 8, 7pm Monthly Meeting

Sept 24, Logan Canyon, Old Ephraim's Grave (contact Paul Kern)

Oct 1, Saddlebred Obstacle Course in Dimple Dell (contact Doris Richards)

Oct 7-9, Robber's Roost (contact Bruce Kartchner), RSVP! Tough riding, requires excellent condition for horse and people.

Oct 15, Settlement Canyon (contact Paul Kern)

Oct 13, 7pm Monthly Meeting

Oct. ?? Bison Roundup

Nov 10, 7pm Monthly Meeting

Nov. 5, Johnson's Pass (contact Larry Newton)

Dec 8, 7pm Christmas Party & Monthly Meeting

DIMPLE DELL SEES INCREASE IN DOG-RELATED ATTACKS

By Brenda Fisher — [Sandy Journal Article](#)

Paul Deputy has been hiking and riding his horses in Dimple Dell Park for more than four years. He's come to love the natural setting so close to his Salt Lake City home and commutes to Sandy to enjoy Dimple Dell as often as he can. But that sense of familiar comfort came to an end on Feb. 5 when a pit bull attacked Deputy and his horse, Maddie. Deputy walked away from the incident unharmed; Maddie wasn't so lucky. "It was a scary situation. I feared for my life when the dog came out of nowhere and attacked us," Deputy said. "I don't have a problem with dogs; I have one of my own. But when they are off leash, that's where the problem lies. In a mixed use setting like this, it's just not appropriate to have dogs running free." Deputy was riding his horse in the gully near 1300 East when the pit bull approached and attacked his boot, spooking the horse and knocking Deputy to the ground. When the horse took off, the dog followed it, leaving Deputy alone. The dog bit Maddie on all four legs and caused the most damage to her right front leg. While her prognosis is good, Deputy doesn't know if he'll be able to bring her back to the gully. Sandy Police have been stepping up patrols in the gully in an effort to cite people who allow their dogs to roam off leash, said Sgt. Kevin Thacker. Animal control has been patrolling

more regularly, as have Sandy police officers, both uniformed and plain clothes officers. "There is a real problem at Dimple Dell and the patrols will continue until compliance is met," Thacker said. "We've seen an increase in citations issued since we stepped

Thacker said the program is still in the works and the details haven't been finalized. "Anytime a dog is off leash, it's an issue we want to address," Thacker said. "Either in the gully or a Sandy neighborhood, it's a safety issue and something we have to maintain control over.



A sign near the top of Dimple Dell Park reminds visitors that dogs must be on a leash at all times. Parks and Recreation Director Scott Earl said his staff went through the park and made sure the 18 signs they posted last year were still in place. He reported only one had been removed.

up patrols in February. It will take time to educate people about the law." Thacker said there was another incident, also in February, involving a Border collie nipping at a horse in Dimple Dell. It was the second time this dog had been in an incident in the park and the second time officers have cited its owner. Thacker said the majority of the tickets that have been written in the last month have been to dog owners living outside of Sandy. In addition to more regular patrols, Thacker said the police are looking into a horseback branch of the Volunteers in Police Service. The horseback VIPS program would be responsible for advising people of the law and reporting dogs off leash, but not issuing tickets.

We want people to know where it's all right to keep dogs off leash, where it's safe. The gully isn't a place for them to do that." Sandy Police Chief Stephen Chapman reported to the City Council on March 15 that his officers reported seeing fewer dogs off leash during their patrols during the week of March 7. Chapman said his officers wrote several citations for horse owners who were riding horses with their dogs off leash. "The policy applies to everyone, whether you're walking in Dimple Dell or riding a horse," Chapman said. "Dogs have to be on a leash, no exceptions." To report a dog off leash or get information about locations suitable to have dogs off leash, contact the Sandy Police Department at 801-840-4000.

**SANDY POLICE:
801-840-4000**

**SANDY ANIMAL CONTROL:
801-352-4450**

Where Sagebrush Still Ain't Plowed

by Paul Kern

Miles from lonesome, where sagebrush's all been plowed,

It's been for me and perhaps for you right lonely in a crowd,
Where some crawl on top and set themselves up proud.

It's they who've not known lonesome - the lonely crowd and all,
Where folks are freely merchandized, based on the markets call.

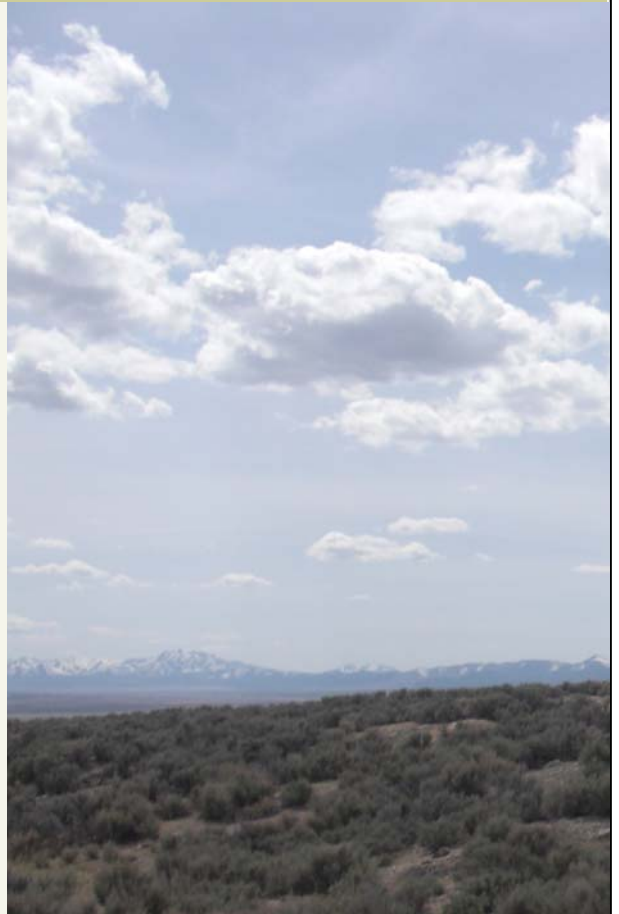
It's more'n just solitary alone – bein' part of the lonely crowd,
Where they take and don't put back and egos go unbowed.
It's the lonely crowd that'll never know the softly rushin' willows,
Where griz' leave tracks and coyotes call, and a distant bull elk bellows.

Where the wind blows hard and the sun burns long and fierce
and hot,
It's there I prefer to spend my time, where most would rather
not.

Where it's just your horse and you and maybe a few trees,
It's lonesome where sagebrush grows, in places wild like these.

Where nights are starry cold and daylight meanders slowly by,
It's way too far for a man to walk, and the trails are dusty dry.
Where places off the beaten track still raise that lonesome feel,
It's lonesome – but hardly lonely - it's where you find what's
real.

Miles from the lonely crowd, where sagebrush still ain't plowed.



EMAIL OR SNAIL MAIL ?

Save a tree! Each month it costs just under \$1 to copy and mail this newsletter to you. If you received this newsletter by snail mail, and if you would be happy to save a dollar and save a tree, email cfurse@ece.utah.edu to receive future newsletters email only.

Each month I email the color newsletter to everyone with an email on file. If you are NOT receiving this by email, please send me your corrected email address. Thank you! Cindy

2011 OFFICERS

President
Tom Smith
254-5570
westernbreeze@comcast.net

1st Vice President
Paul Deputy
539-0210(H), 725-1133(c)
pmdeputy@gmail.com

2nd Vice President
Perry White
254-8798(H); 594-2495(W)
whitemt@aol.com

Secretary
Pat Wilson
(801) 278-6608
patricia@csolutions.net

State Reps:
Paula Hill 766.8393
colostatemama@yahoo.com
Bruce Kartchner 819-3506
bruce1349@gmail.com

Past President
Paul Kern
942-8928
kernpr@gmail.com

Education:
Paul Hillier 571-6425
George & Christa Muller
619-8632

Treasurer
Larry Newton 553-7702
Bignewt1@comcast.net

Service Coordinator:
Fred Leslie
553-1873
fredleslie101@gmail.com

Historian:
Rinda Black
278-2112
rblack@hotmail.com

Newsletter Editor:
Cindy Furse
581-9225
cfurse@ece.utah.edu



Five Mile Pass — West Desert Mile Marker 10 (See Map on Page 3)

'The Cabin' is a ramshackle hunting cabin on a hill to the north of MileMarker 10. It's a nice destination, because it has a great view, a fire ring, and ... well ... it's a place to ride to! 'The Kitchen' is a rock outcropping high on the hill to the south of Mile Marker 10. It is a good place for lunch also with a great view and fire pit.